

**Distributed Computing Systems Laboratory
Institute of Computer Science
Foundation for Research and Technology
Hellas**

**European Network of Affined Honeypots
(NoAH)**

**Honey@Home for Windows Installation
Guide**

21/01/2008

Table of Contents

I.	Download	3
II.	Installation	6
III.	Registration	14
IV.	Launching Application	17
V.	Other Info & References	19

I. Download

In order to download honey@home for windows first visit <http://www.honeyathome.org> . Click the download link in the left side of the page to navigate to the downloads page (Figure 1).

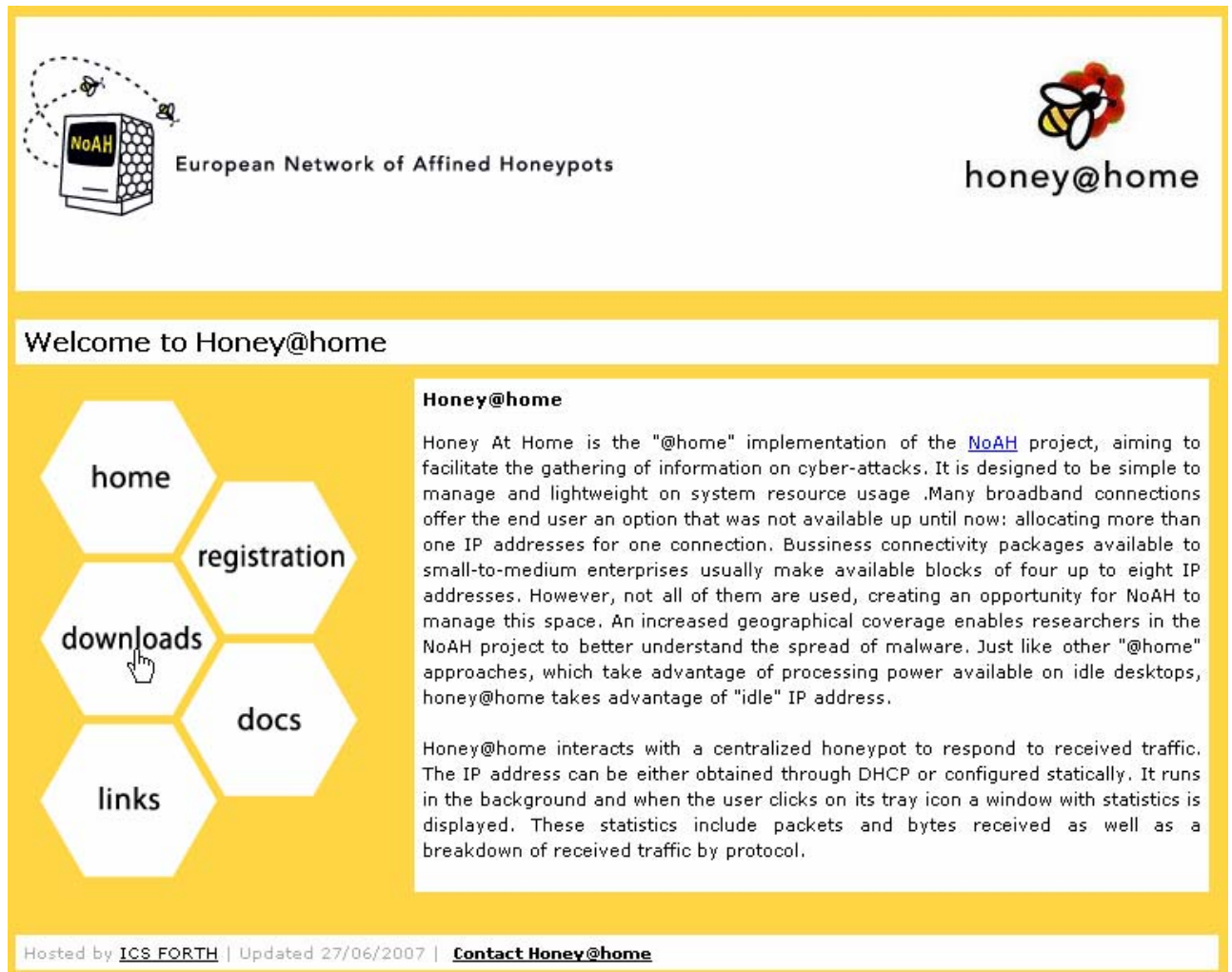


Figure 1. Click download link to go to the download web page.

In the downloads page click the link of the windows version of honey@home as shown in Figure 002 in order to download the application.

European Network of Affined Honeydumps

honey@home

Downloads

home registration
downloads docs
links

The Linux version of Honey@home is available [here](#). Instructions on how to run Honey@home can be found in the README file of the distribution.

Windows version of Honey@Home in a .rar archive including installation wizard (2000/XP/Millennium) [here](#)

We would like to inform you that you need to [register](#) your client before it can start running

Hosted by [ICS FORTH](#) | Updated 27/06/2007 | [Contact Honey@home](#)

Figure 2. Click the windows honey@home link to download it.

The application is inside a rar archive, that means you must have WinRar^[1] or any other similar application installed in order to open and extract rar archives.

A popup window will appear asking you if you want to save the rar file (Figure 3).

Click 'save' and then select the folder you want the file to be downloaded.

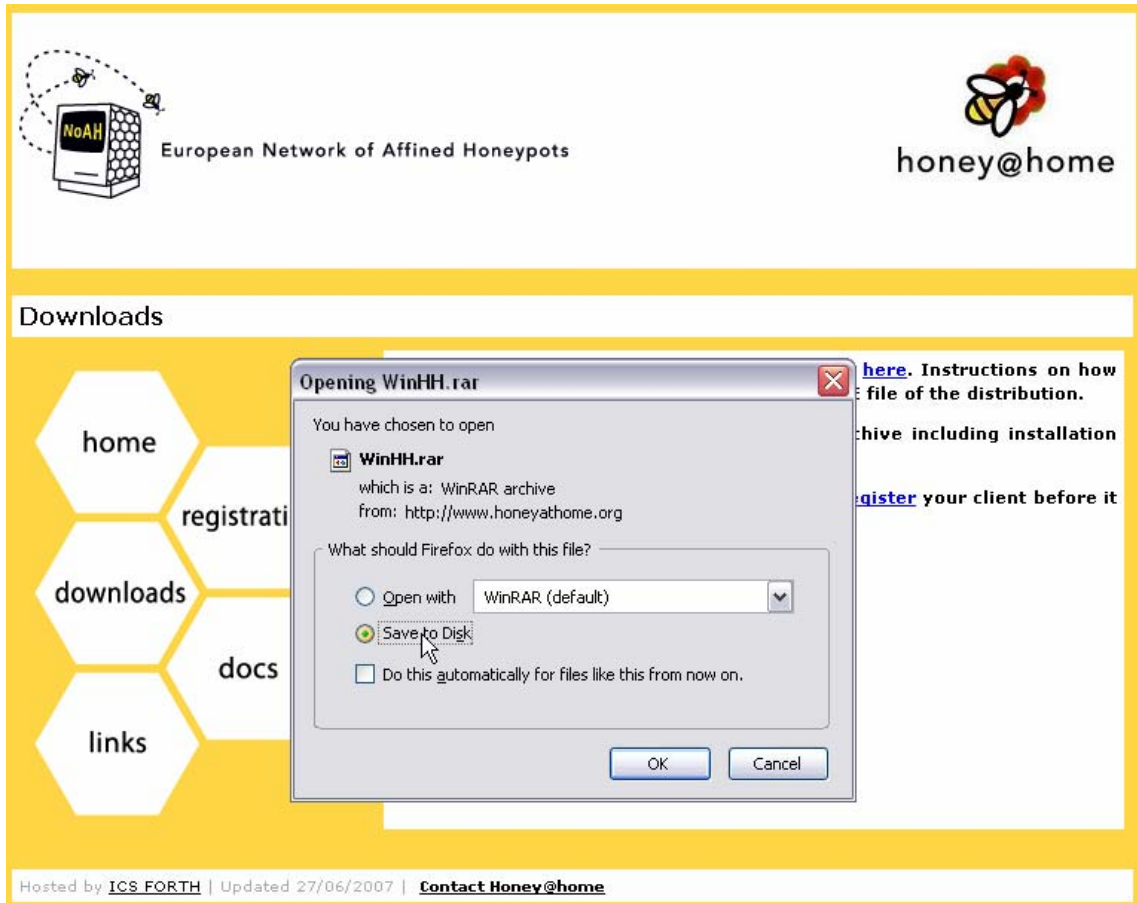


Figure 3. Click 'save' to save the file in your disk.

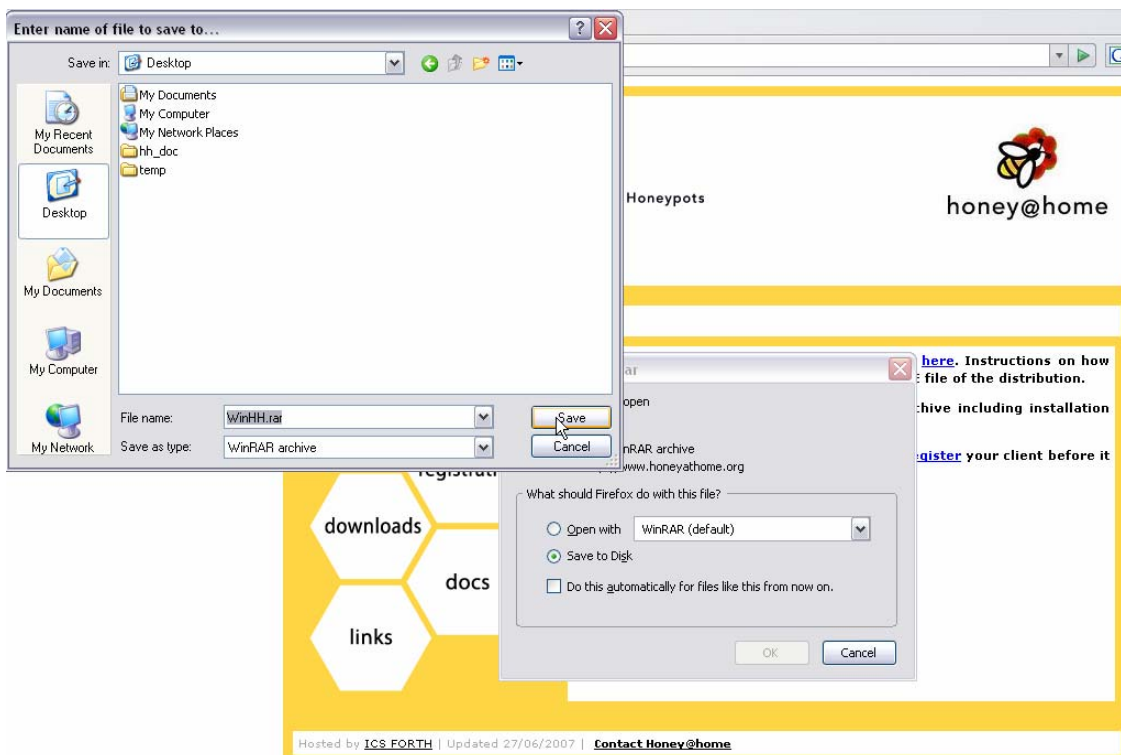


Figure 4. Select the folder you want the file to be downloaded.

If you have performed all these steps you're done with the download procedure.

II. Installation

Just go to the folder you downloaded the Honey@Home rar file and double click it in order to open it with WinRAR (Figure 5).

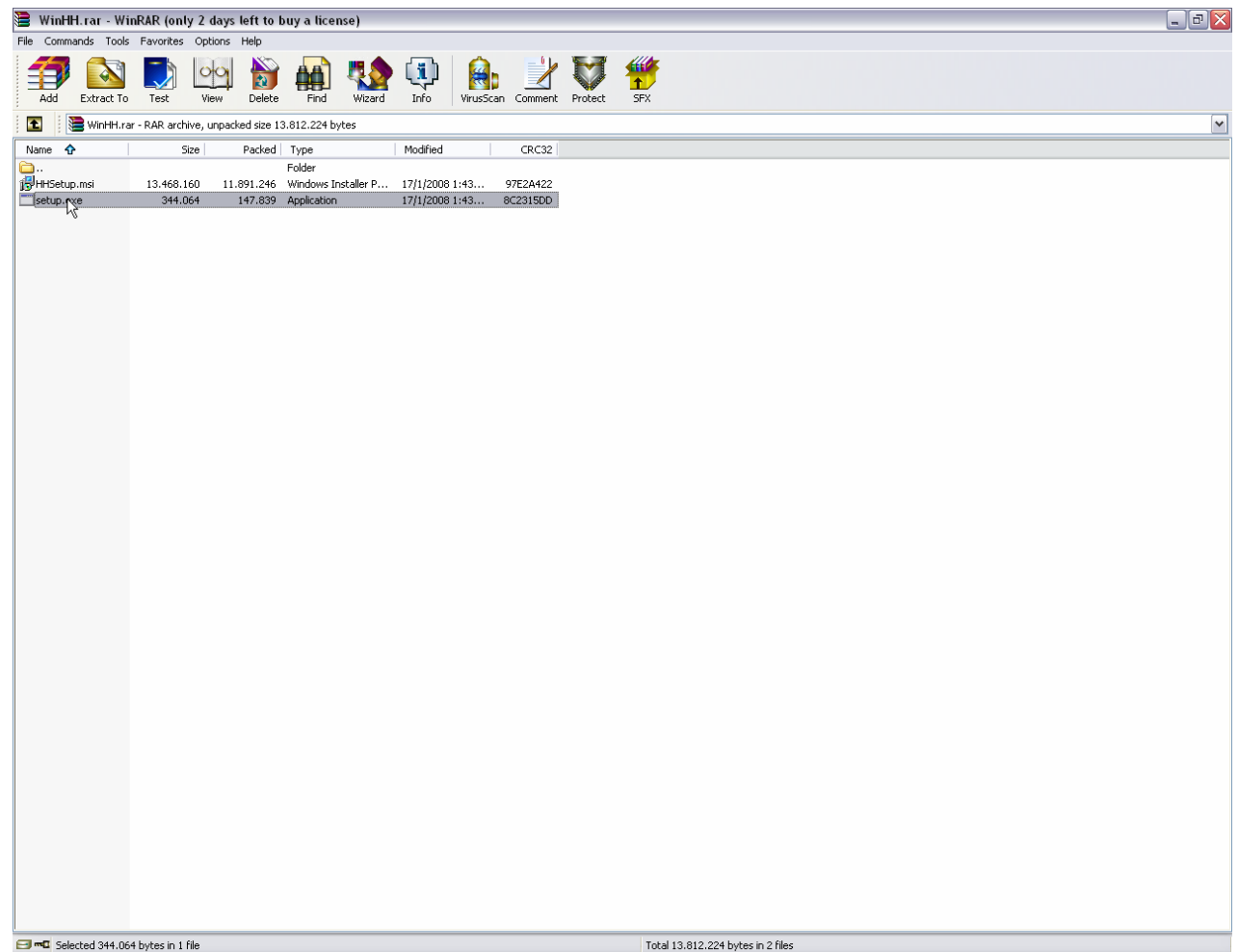


Figure 5. Open the rar file with winrar and double click the setup.exe.

After opening it, you will see two files inside the WinRAR's file browser. Double click the one named 'setup.exe' to start the installation wizard. Figure 6 shows the first screen of the installation wizard.



Figure 6. First screen of the Honey@Home installation wizard. Click the 'next' button and the 2nd screen of the wizard will appear (Figure 7.).

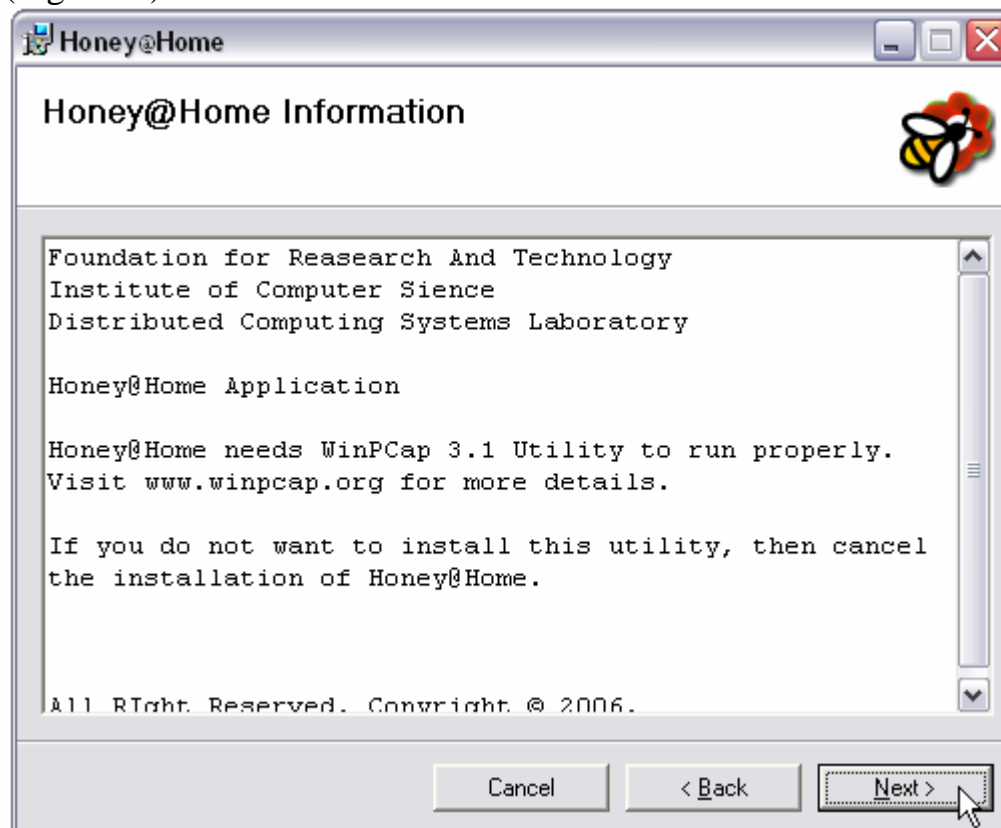


Figure 7. Wizard window that shows information about Honey@Home.

Click 'next' again and a new window will appear asking you were to install Honey@Home. In Figure 8, you can see the installation folder path, which you can change either by typing a new path in the text box or by clicking the 'browse' button and selecting a folder. Additionally you can select if everyone can run Honey@Home or just you. In Figure 8, the default values are shown. elect your suitable configuration and click 'next'.

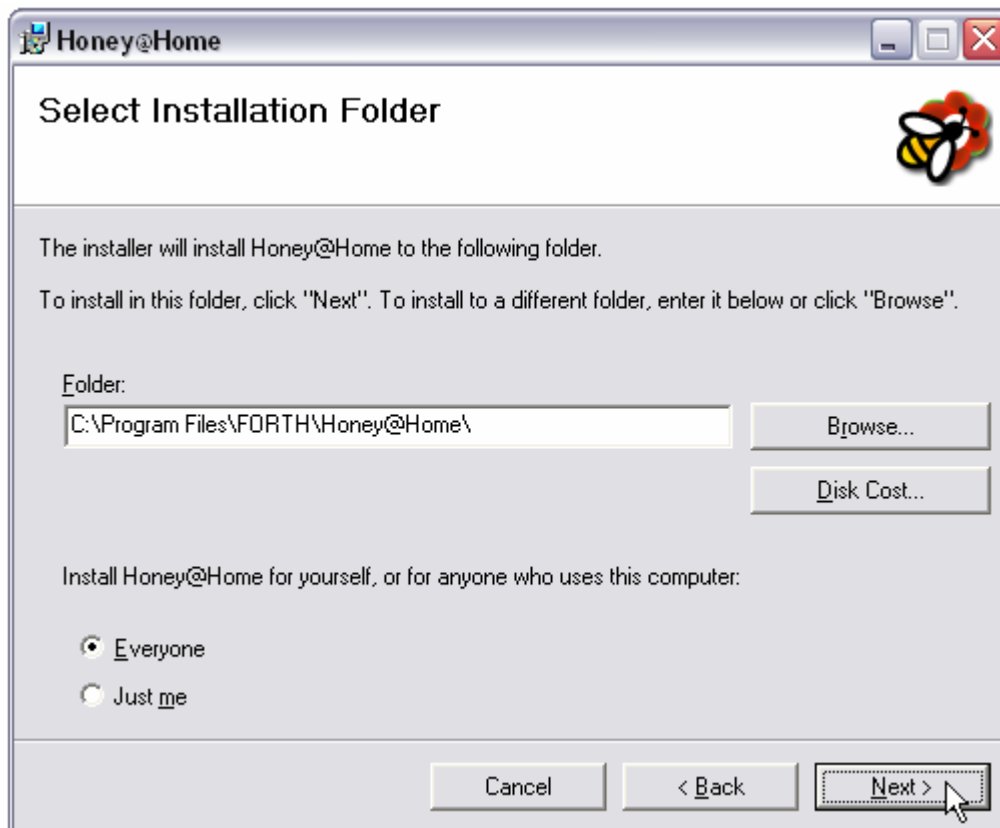


Figure 8. Select where to install Honey@Home and who has permission to run it.

The next window will inform you that Honey@Home installation wizard is ready to proceed with the installation of Honey@Home application. By clicking 'next' you agree with this (Figure 9).

In Figure 10 you see the installation wizard performing the installation of Honey@Home in your computer. Progress bar shows the progress of the installation.

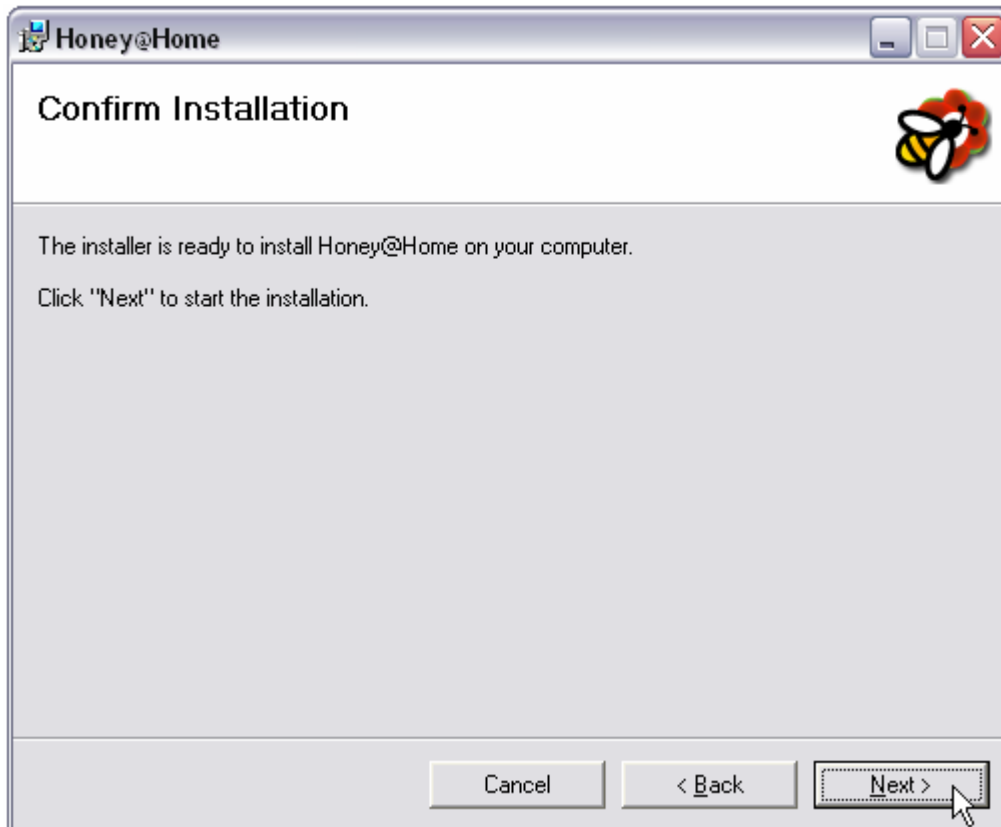


Figure 9. Final step of configuration. By clicking 'next' the installation procedure will start.

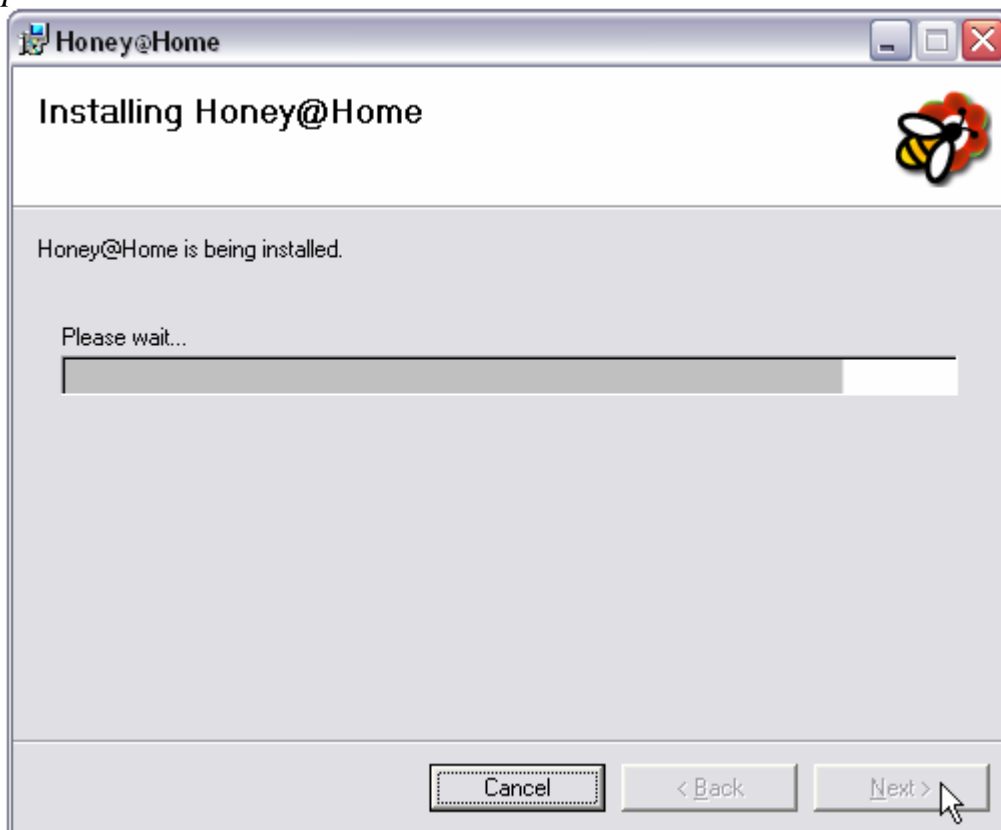


Figure 10. Performing the Honey@Home installation.

If you already have WinPcap^[2] (Windows Packet Capture library) installed the next window will appear (Figure 11).

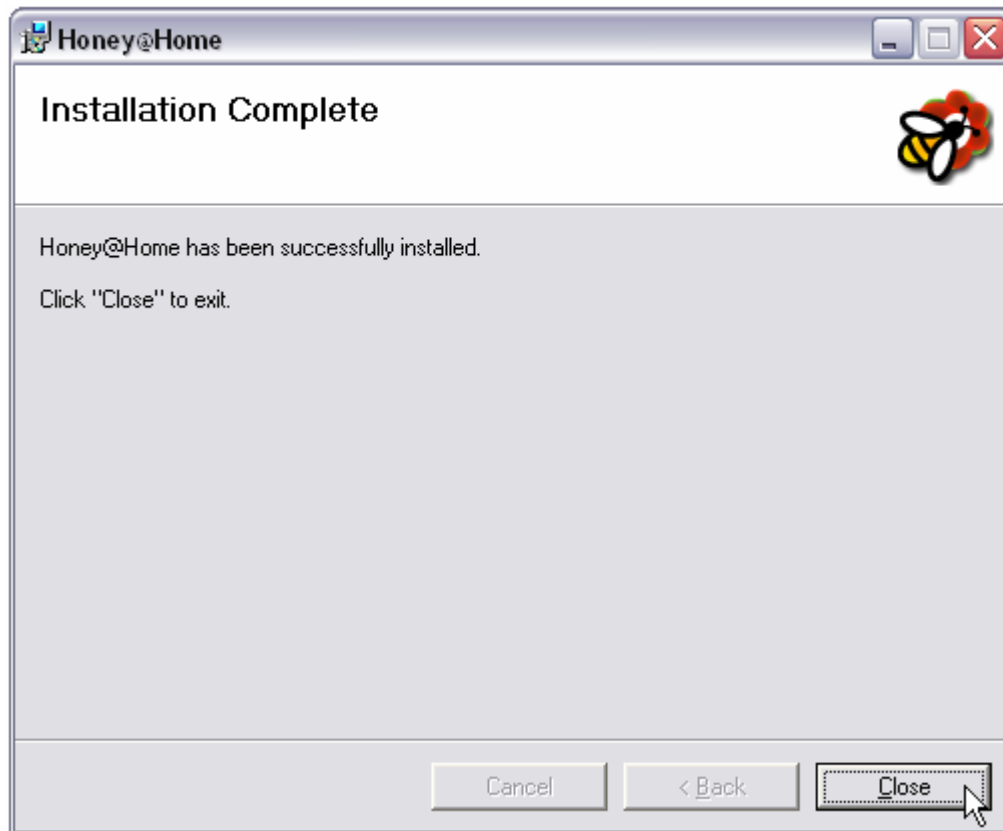


Figure 11. Honey@Home has been installed successfully.

If you do not have WinPcap installed, Honey@Home installation wizard will find out that WinPcap is not installed and will ask you if you want to install WinPcap, since it comes with Honey@Home together. The first window of the WinPcap installer is shown in Figure 12.

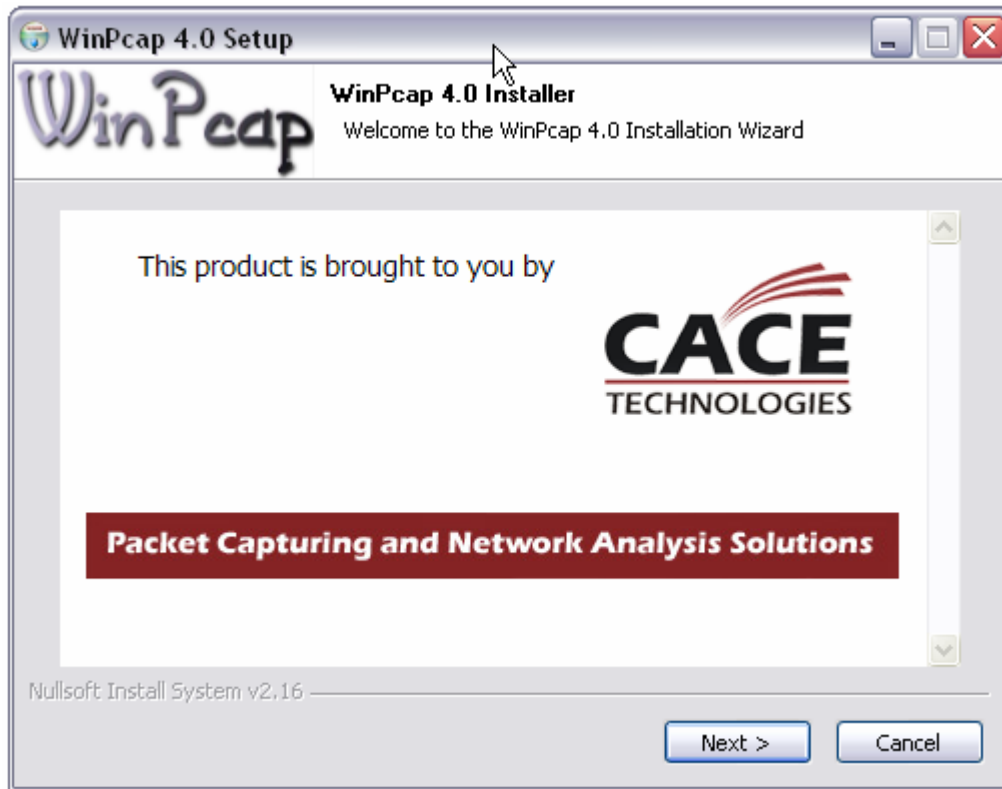


Figure 12. First screen of WinPcap installation wizard.



Figure 13. Second screen of WinPcap installation wizard.

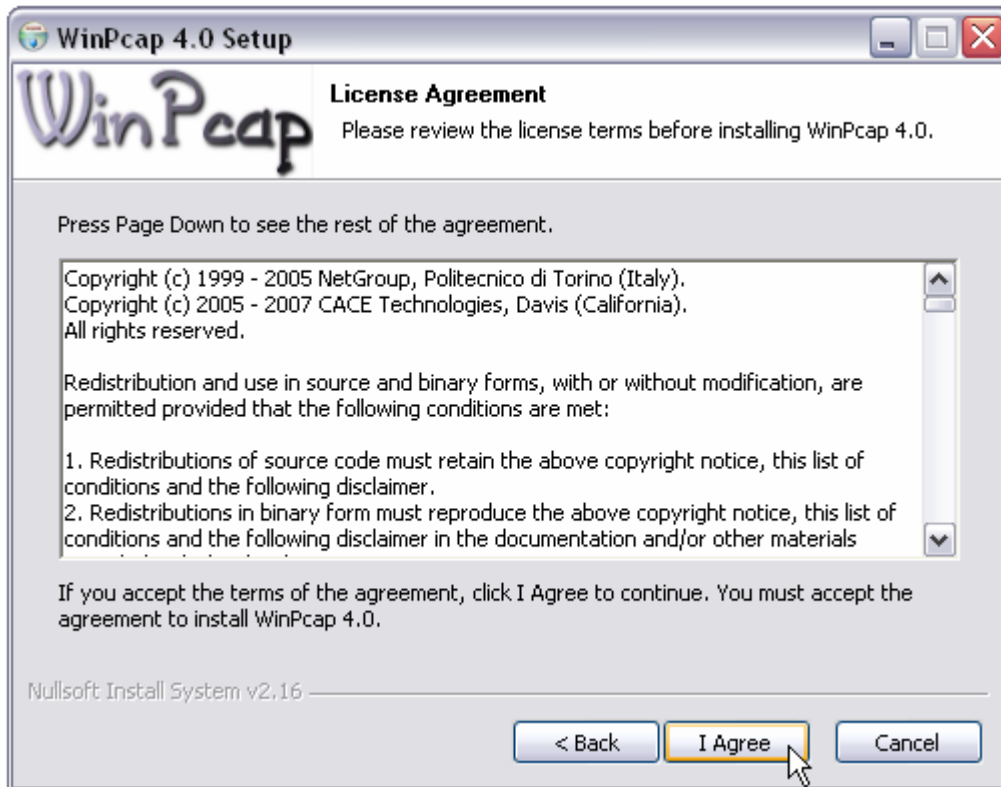


Figure 14. Information about WinPcap in the installation wizard.

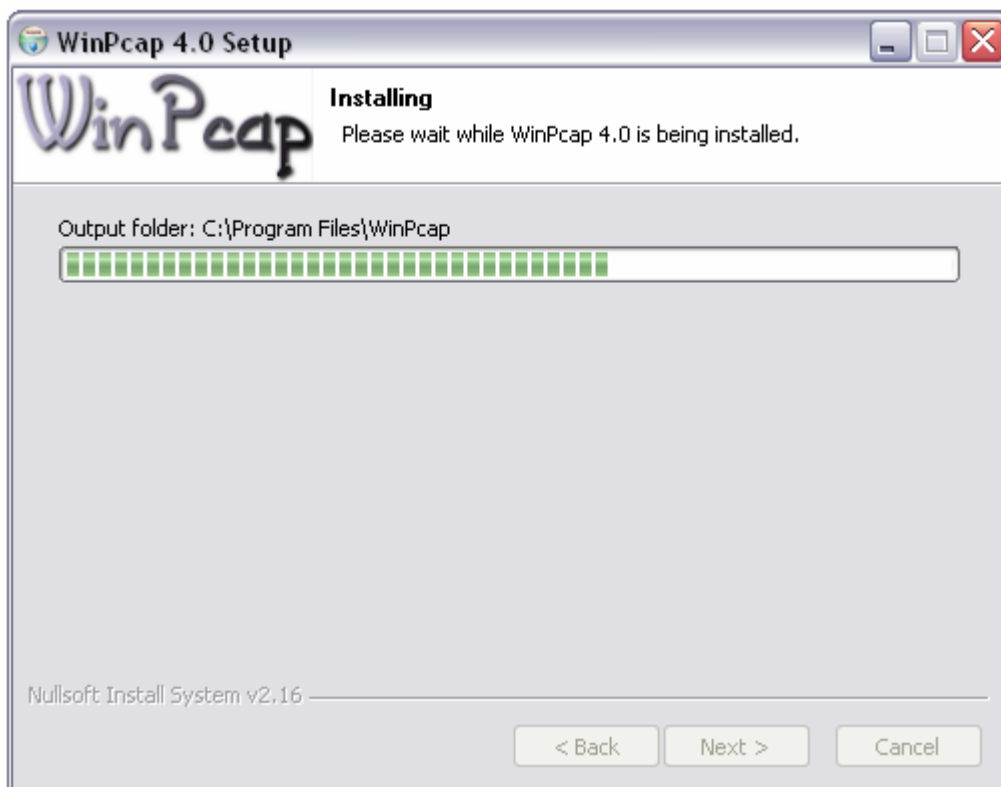


Figure 15. Installation of WinPcap.



Figure 16. Final screen of the WinPcap installation wizard.

If you reach the screen in Figure 16, you will have installed WinPcap successfully.

After clicking 'Finish' in the window in Figure 16, the final window of Honey@Home installation window will appear (Figure 11) informing you that both Honey@Home and WinPcap were installed correctly.

After the installation procedure of Honey@Home, a start menu and a desktop shortcut will be created for you. You can run Honey@Home by just clicking one of these shortcuts, but first consider registering your Honey@Home at www.honeyathome.org. Registration procedure is explained in the next section.

III. Registration

In order to register your Honey@Home and get a key (serial number) you may visit <http://www.honeyathome.org> and click the registration link in the left side of the page (Figure 17).

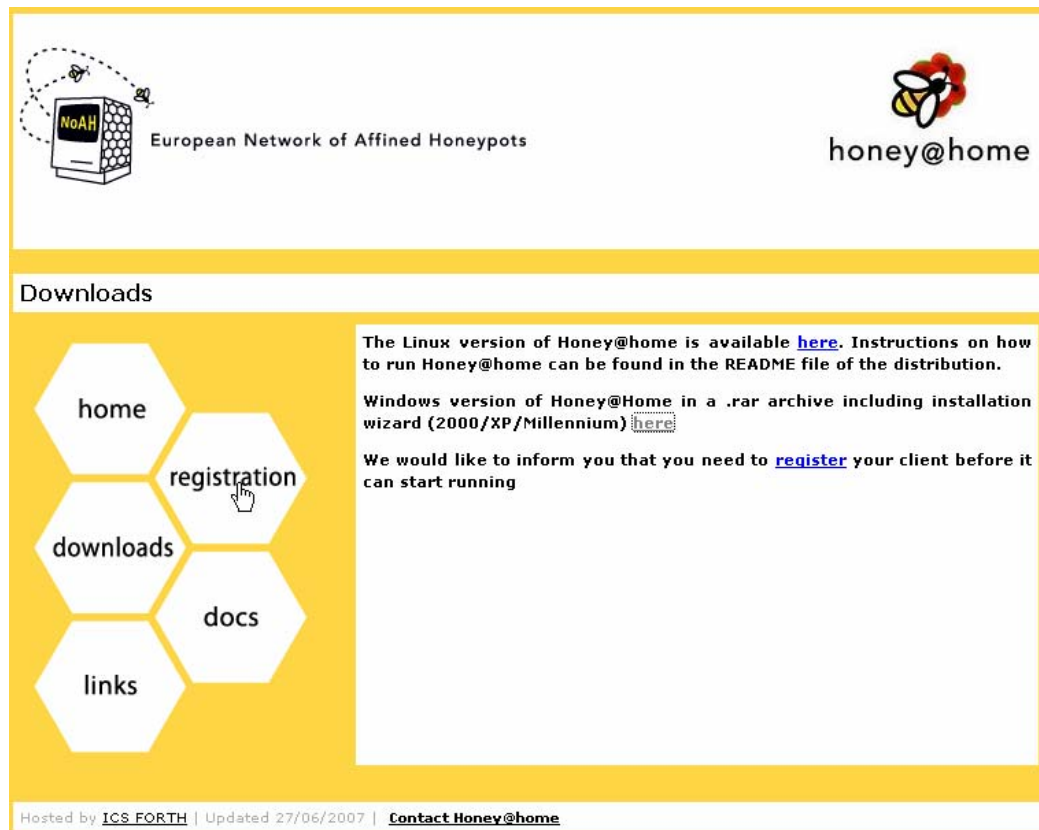


Figure 17. Click the registration link to navigate to the registration page.

After clicking the registration link, you will be navigated to the registration page that looks like Figure 18. This page contains an animated captcha mechanism that you have to pass in order to continue registration. You must have Java Runtime Environment^[3] (JRE) installed in order the browser to run the java application properly.

Click the shape that the line above the animation tells you to click. If you do not click the correct shape, registration will fail.

If you click the correct one, you will be navigated to a new page (Figure 19) asking you to enter some information about you. Text boxes with '*' in their side are essential for the registration. Fill up the text boxes and click the submit button in the bottom of the registration form.

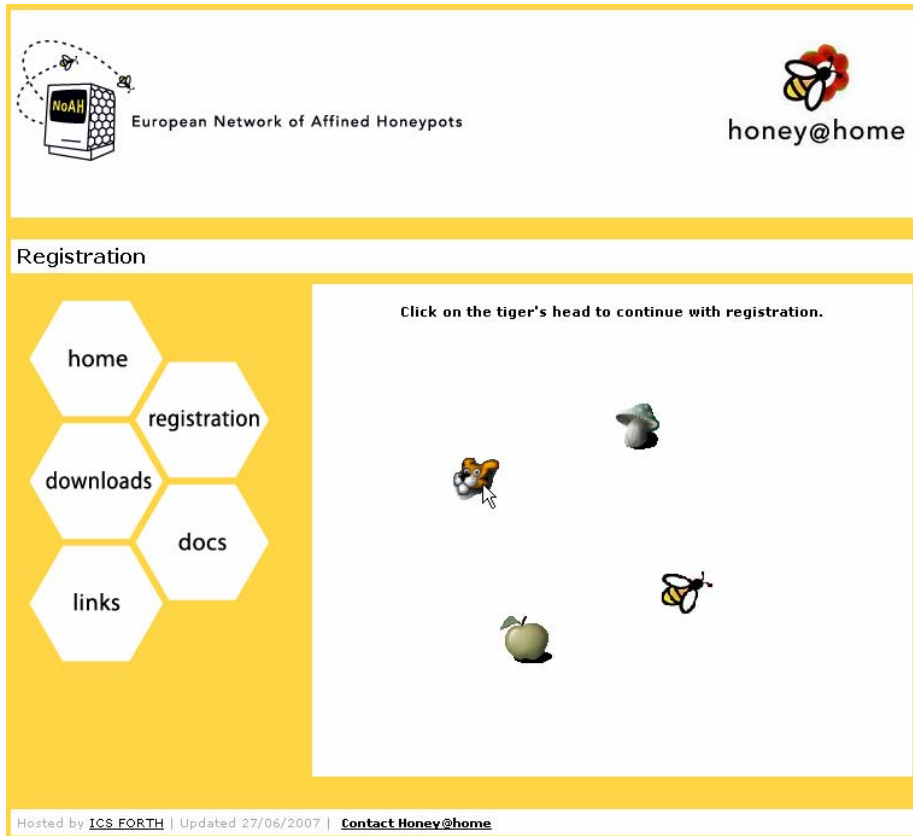


Figure 18. Animated CAPTCHA mechanism. Click the correct shape.

Figure 19. Registration form.

After filling up the registration form. A popup window will automatically appear asking you where to save the user.key (Figure 20).

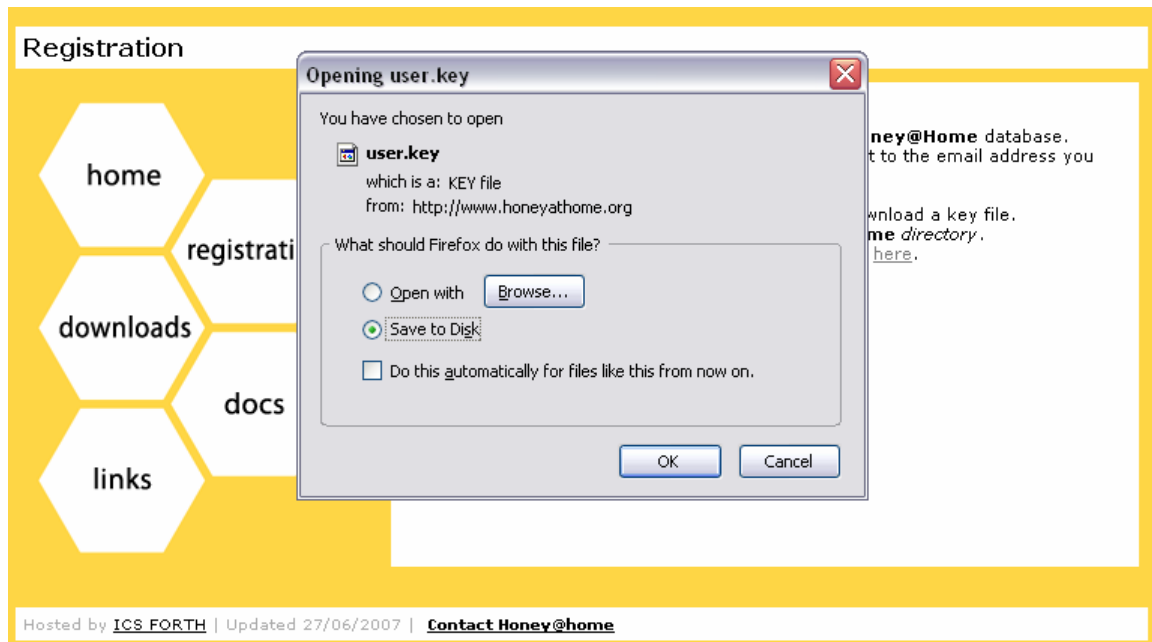


Figure 20. Prompt for saving the user.key.

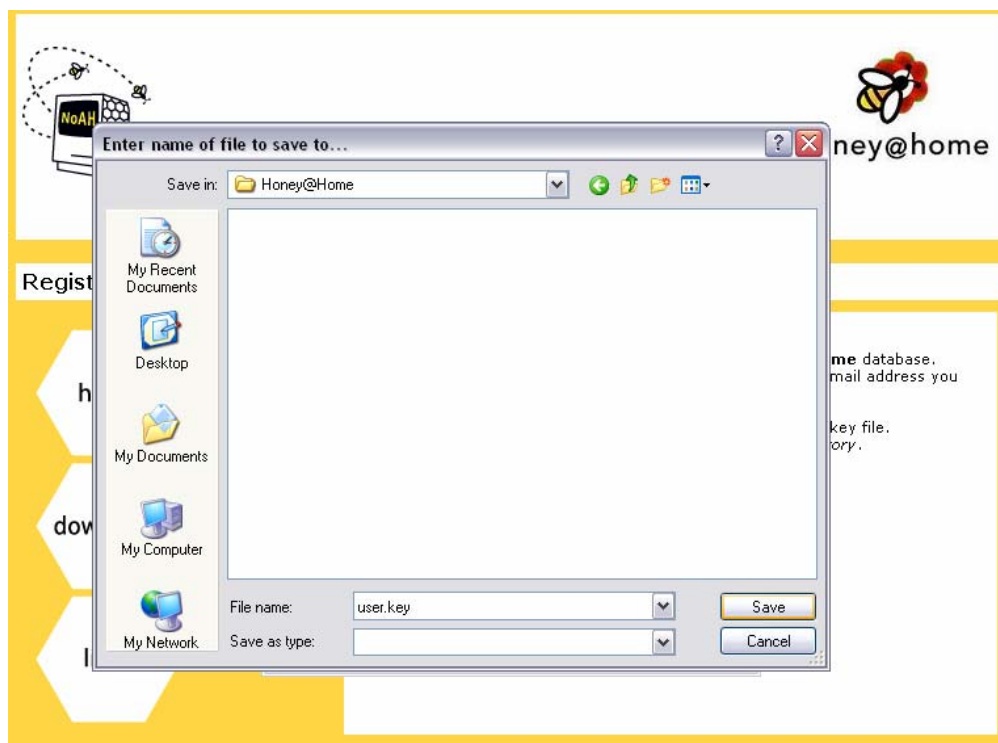


Figure 21. Select where to save the user.key. Choose your Honey@Home installation folder.

When you are asked where to save the key, select you Honey@Home installation folder.

Now, registration is complete and you are ready to run Honey@Home application.

IV. Launching Application

Just double click in your Honey@Home shortcut in your desktop or select Honey@Home shortcut from the Start Menu: Start>Programs>Honey@Home>Honey@Home.

The first screen of Honey@Home asks you to select the network interface Honey@Home will operate on (Figure 22).

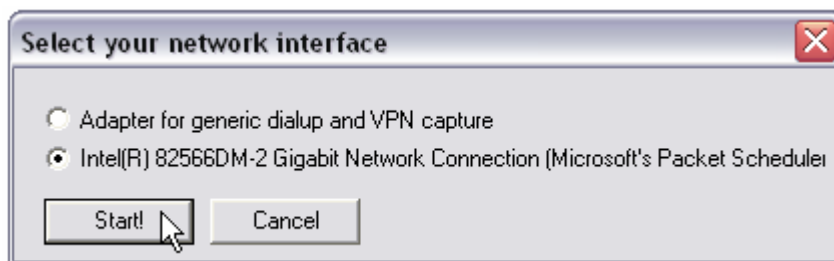


Figure 22. Select the network interface.

After selecting network interface click the 'start' button to start Honey@Home.

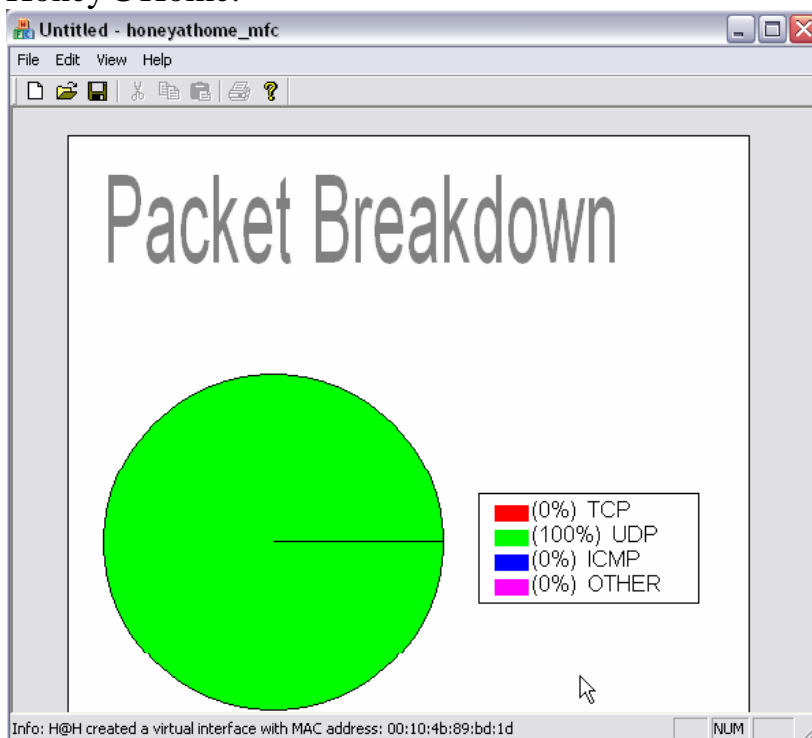


Figure 23. Honey@Home creating a virtual interface with a new MAC.

Honey@Home will start, authenticate itself to the NoAH server and if authentication is completed successfully, Honey@Home will create a virtual interface with a new MAC address (Figure 23), get a new IP address from your network's DHCP server (Figure 24) and start retrieving data.

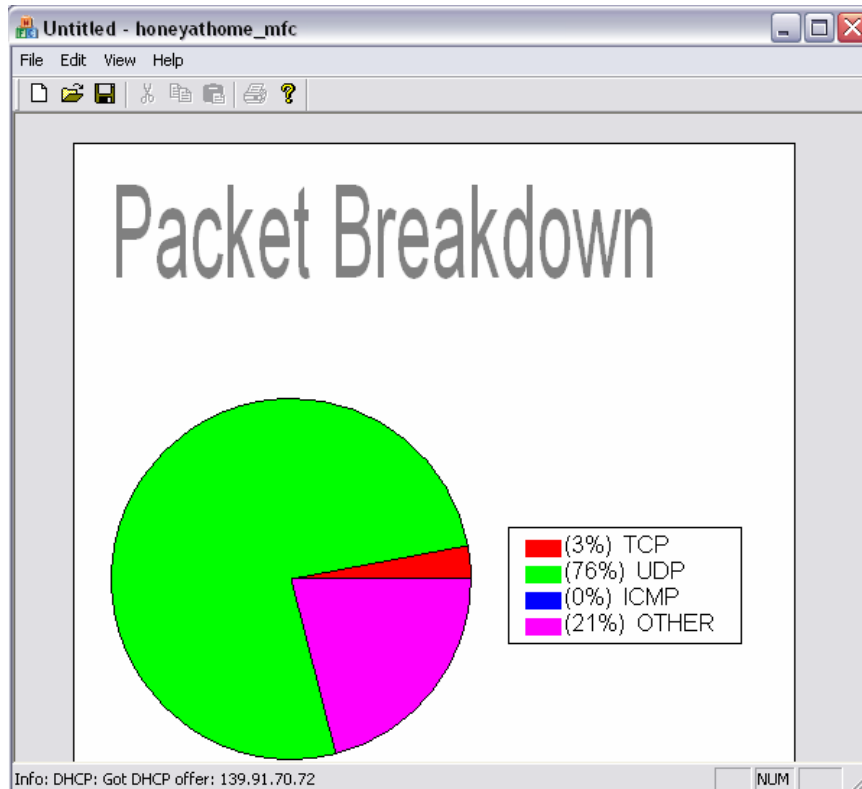


Figure 23. Honey@Home got an IP address from DHCP. (Here, in the ICS/FORTH network).

V. Other Info & References

- [1] WinRar <http://www.rarlab.com/>
- [2] WinPcap <http://www.winpcap.org/>
- [3] Java Runtime Environment (JRE)
<http://www.java.com/en/download/manual.jsp>

European, Network of Affined Honeypots (NoAH)
<http://www.fp6-noah.org/>



Distributed Computing Systems Laboratory, ICS/FORTH, Hellas
<http://dcs.ics.forth.gr>

